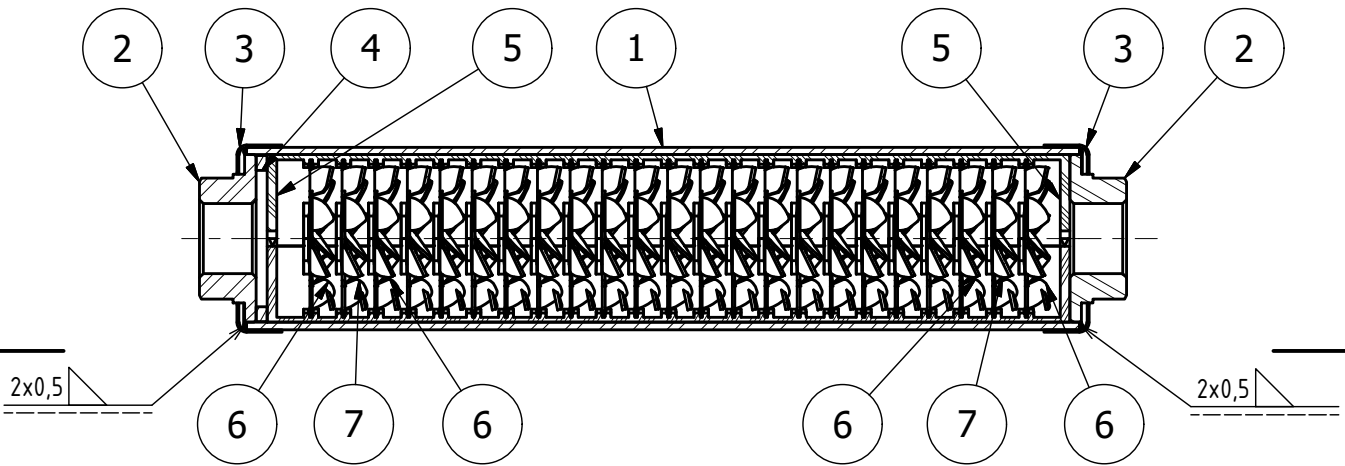


A-A ( 1 : 2 )



>>> Water Flow >>>

7	Zinc VitalTurbine	P0,7-1000x2000 EN988	D-Zn (2.2203) Alt: Zn (Z1 Grade)	VT-TiZn-D42	11	0,007 kg
6	Brass VitalTurbine	P0,6-1000x2000 STN 42 8305	CW508L (CuZn37)	VT-CuZn-D42	12	0,007 kg
5	Core Tube		POM-C Hostaform C9021	CT-K-43,7/212,3	2	0,027 kg
4	Ring		1.4301	R-KW-44x36x3	1	0,012 kg
3	Collar	P0,6-1000x2000 EN10088	1.4301	C-KW-50x35x15	2	0,016 kg
2	End Cap 1/2"	Ø45 EN10278	1.4301	EC-KW-Rp1/2-44x15	2	0,087 kg
1	Tube	Ø48,3x2 EN10217	1.4301	T-KW-48.3x220	1	0,513 kg
Pos.	Title	Semifinished product	Material	Drawing Nr.	Pcs.	Weight

Projection 	Format <b>A4</b>	Scale <b>1 : 2</b>	Material	Semifinished product	Surface <b>Ra ISO 1302</b>	Tolerances <b>ISO 2768 mK</b>
----------------	---------------------	-----------------------	----------	----------------------	-------------------------------	----------------------------------

Department SAT R&D	Designed by Michal Špak	Date 18. 4. 2019	Approved	Roughness
-----------------------	----------------------------	---------------------	----------	-----------

	Title <b>IPS Kalyxx RedLine 1/2 Welded</b>	Weight (kg) 0,932 kg
	Drawing Nr. <b>IPS-KW-RL-Rp1/2</b>	Sheet: <b>1/1</b>